

Lenovo

Moto G8 Power



**Lenovo Moto G8 Power
Level 2 – Service and Repair Manual**

REVISION HISTORY

<i>Revision</i>	<i>Date</i>	<i>Notes</i>
1		Initial Release.



TABLE OF CONTENTS

Revision History	2
List of Tables	6
Table of Figures	6
Safety Information	7
Cautions and Warnings.....	7
Battery Safety Guidelines.....	7
Introduction	8
External Views.....	8
Main Exploded Views.....	10
Disassembly and Recovery	13
Disassembly and Recovery Map.....	13
Tools Required for Disassembly	14
SIM Tray Removal	16
Water Detection Label Inspection	17
IMEI Label Removal.....	18
Battery Inlay Removal	19
Screw Tampering Label Inspection.....	27
Top Carrier Removal	28
Water Detection Label Inspection	30
Rear-Facing Camera Removal	31
Main PCB Removal.....	33
Water Detection Label Inspection	35
Front-Facing Camera Removal.....	36
Headset Jack Grommet Removal	37
Finger Print Sensor Conductive Foam Removal.....	38
Main PCB Graphite Removal	39
Main PCB Copper Foil Removal	40
Receiver Removal.....	41
Speaker Box Removal	42
Water Detection Label Inspection	43
Speaker Box Foam Removal	44
Sub Board Removal	45
USB Grommet Removal.....	47
Sub Board Adhesive Removal	48
Vibrator Removal	49
Battery Removal.....	50
Coax Cable Removal	52

Lenovo Moto G8 Power

Level 2 – Service and Repair Manual

Primary MIC Channel Component Removal.....	53
Primary MIC Seal Foam Removal.....	54
Secondary MIC Channel Component Removal.....	55
Secondary MIC Seal Foam Removal.....	56
Sim Tray Thimble Removal.....	57
Battery Protection Foam Removal	58
Coaxial Cable line Mylar Removal	59
Main Flex Removal	60
Side Key Hole Seal Foam Removal.....	61
Rear-Facing Camera Lens Removal	62
Parts Refresh.....	63
Tools Required for Parts Refresh	63
Battery Inlay Cleaning	64
Front Housing Cleaning	65
Top Carrier Cleaning.....	66
Assembly	67
Assembly Map.....	67
Tools Required for Assembly	68
Sim Tray Thimble Assembly	70
Water Detection Label Assembly.....	71
Sub Board Adhesive Assembly.....	72
Battery Protection Foam Assembly.....	73
Primary MIC Foam Assembly	74
Primary MIC Channel Component Assembly	75
Secondary MIC Foam Assembly.....	76
Secondary MIC Channel Component Assembly.....	77
Main PCB Copper Foil Assembly.....	78
Main PCB Graphite Assembly.....	79
Water Detection Label Assembly.....	80
Headset Jack Grommet Assembly.....	81
Main PCB Assembly	82
Front-Facing Camera Grommet Assembly	83
Front-Facing Camera Assembly	84
Rear-Facing Camera Assembly.....	85
Receiver Assembly	87
Vibrator Assembly	88
Water Detection Label Assembly.....	89
USB Grommet Assembly	90
Sub Board Assembly.....	91

Lenovo Moto G8 Power
Level 2 – Service and Repair Manual

Coax Cable Assembly	92
Coaxial Cable Protective Mylar Assembly	94
Main FPC Adhesive Assembly	95
Battery Adhesive Assembly	96
Main Flex Assembly	97
Battery Assembly	98
Rear-Facing Camera Grommet Assembly	100
Side Key Hole Seal Foam Assembly	101
Flash Lens Adhesive Assembly	102
Flash Lens Assembly	103
Rear-Facing Camera Adhesive Assembly	104
Rear-Facing Camera Lens Assembly	105
Top Carrier Assembly	106
Finger Print Sensor Conductive Foam Assembly	107
Speaker Box Cushioning Foam Assembly	108
Speaker Box Assembly	109
Finger Print Sensor Assembly	110
Finger Print Sensor CONN Cover Assembly	111
Battery Inlay Assembly	112
IMEI Label Assembly	115
Sim Tray Assembly	116

LIST OF TABLES

Table 1. External Views Parts List..... 9

Table 2. Assembly Exploded View Parts List 10

TABLE OF FIGURES

Figure 1. External Views..... 8

Figure 2. Assembly Exploded View 10



SAFETY INFORMATION

Cautions and Warnings

Electrostatic Discharge

The phone components may be damaged by electrostatic discharge (ESD). Always use an ESD mat and ground strap when working with internal components.

Battery Safety Guidelines

Handle Battery with care. Ensure Battery edges and surfaces are not dented or deformed. If the Battery Pack is dropped to the floor, it may be internally damaged and must be scrapped.

Ensure all surfaces, fixtures, and phone components contacting the Battery are smooth and clean.

Ensure Battery and its insulation are not damaged (e.g. scratched, dented, punctured) prior to and throughout assembly.

Prior to assembly, ensure Battery edges and surfaces are not dented or deformed, and that fixtures and parts that will contact the Battery are free of foreign material.

Ensure screws and screwdrivers do not contact the Battery.

Failure to adhere to Safety Critical Note(s) may increase risk of rupture, burning, or failure to function safely when used by the customer.

INTRODUCTION

External Views



Table 1. External Views Parts List

<i>Reference #</i>	<i>Description</i>
1	Front-Facing Camera
2	LED
3	Receiver
4	P&L Sensor
5	Volume Key
6	Power Key
7	Camera Lens
8	Camera Ring
9	Flash Lens
10	FPS
11	FPS Bezel
12	Battery Inlay
13	Speaker Mesh
14	USB Port
15	Front Case
16	Main Lens
17	Housing Frame
18	Sim Door
19	Headset Jack

Main Exploded Views

Figure 2. Assembly Exploded View

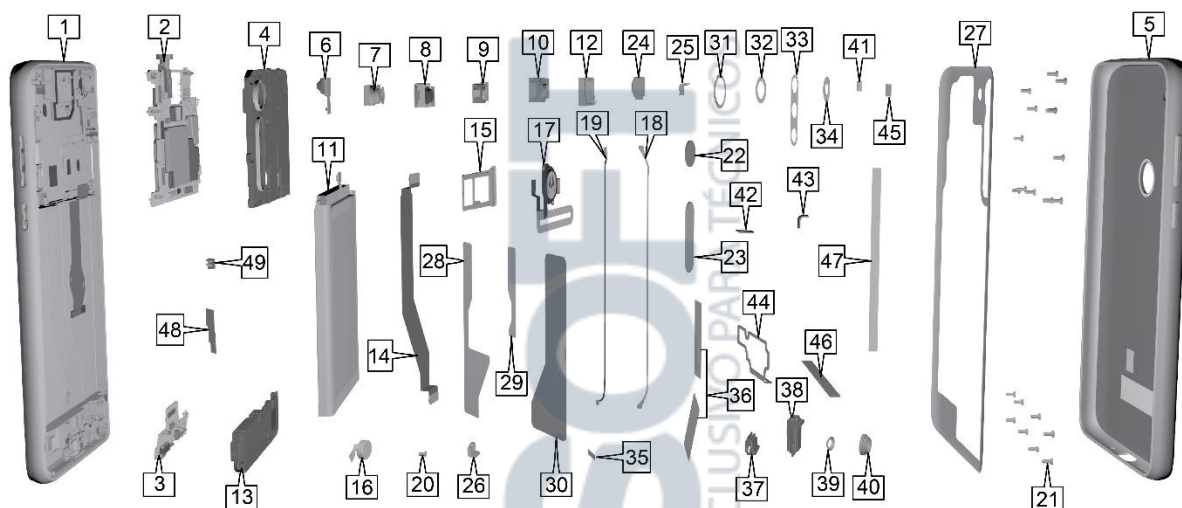


Table 2. Assembly Exploded View Parts List

Reference #	Description	Recovery Part
1	Sofia R FRU TP LCM Assy Vulcan Sofia R FRU TP LCM Assy Bermuda	Yes
2	ASSY,BD KIT,Sofia R BR 4+64G Sofia R FRU MB LATAM 4+64G DS Sofia R FRU MB LATAM 4+64G SS Sofia R FRU MB ROW 4+64G DS	Yes
3	ASSY,DTR BRD,Sofia R BR 4+64G Sofia R FRU Sub BD LATAM Sofia R FRU Sub BD ROW	Yes
4	Sofia R FRU Back Cover Top Assy	Yes

Lenovo Moto G8 Power
Level 2 – Service and Repair Manual

<i>Reference #</i>	<i>Description</i>	<i>Recovery Part</i>
5	Sofia R BATCVR Etching Vulcan BR Sofia R BATCVR Etching Bermuda BR Sofia R FRU BATCVR Assy Vulcan Sofia R FRU BATCVR Assy Bermuda Sofia R BATCVR Etching Bermuda AP Sofia R BATCVR Etching Vulcan AP Sofia R BATCVR Etching Bermuda EU Sofia R BATCVR Etching Vulcan EU Sofia R BATCVR Etching Bermuda LATAM Sofia R BATCVR Etching Vulcan LATAM	Yes
6	MDL,CAMR,16M,sofia;Front;F16A1QAA;Q Tech	Yes
7	MDL,CAMR,8M,F4H7YCC	Yes
8	MDL,CAMR,16M,sofia;after16M;F16E10AF;Q T	Yes
9	MDL,CAMR,2M,sofia;after2M;L02AA30;Ofilm	Yes
10	MDL,CAMR,8M,AF,sofia row;front8M;F8856DG	Yes
11	ACCY,BAT,BAT 5000mAh KZ50 ATL536580 ATL	No
12	WT+710324100291+ Speaker	No
13	WT710320000221+lower horn BOX component	Yes
14	WT713300511011+FPC component	No
15	WT715308009591+three choice two SIM tray WT715308009601+Black cato_PC+SUS301_YJ WT715308009661+three choice two SIM tray WT715308009671+three choice two SIM tray	Yes
16	WT+710613000331+motor	No
17	FINGERPRT SCANNER,Sofia R,Vulcan,FPC1520 FINGERPRT SCANNER,Sofia R,Bermuda,FPC152	Yes
18	WT715302001621+coaxial line 2	Yes
19	WT715302001611+coaxial line 1	Yes
20	WT710920001221+screw BLK	No
21	WT710920001211+screw WHT	No
22	WT711900511031+rear lens 1	Yes
23	WT711900511041+rear lens 2	Yes
24	WT712300511091+Finger Print CONN cover	Yes
25	WT712300511111+sub MIC channel component	Yes
26	WT712300511101+main MIC channel component	Yes
27	Sofia R Adh_BATCVR &712100511341 CSS	No
28	WT712100511051+battery gum 3_SCH	No
29	WT712100511041+battery gum 2_SCH	No
30	WT712100511031+battery gum 1_SCH	No

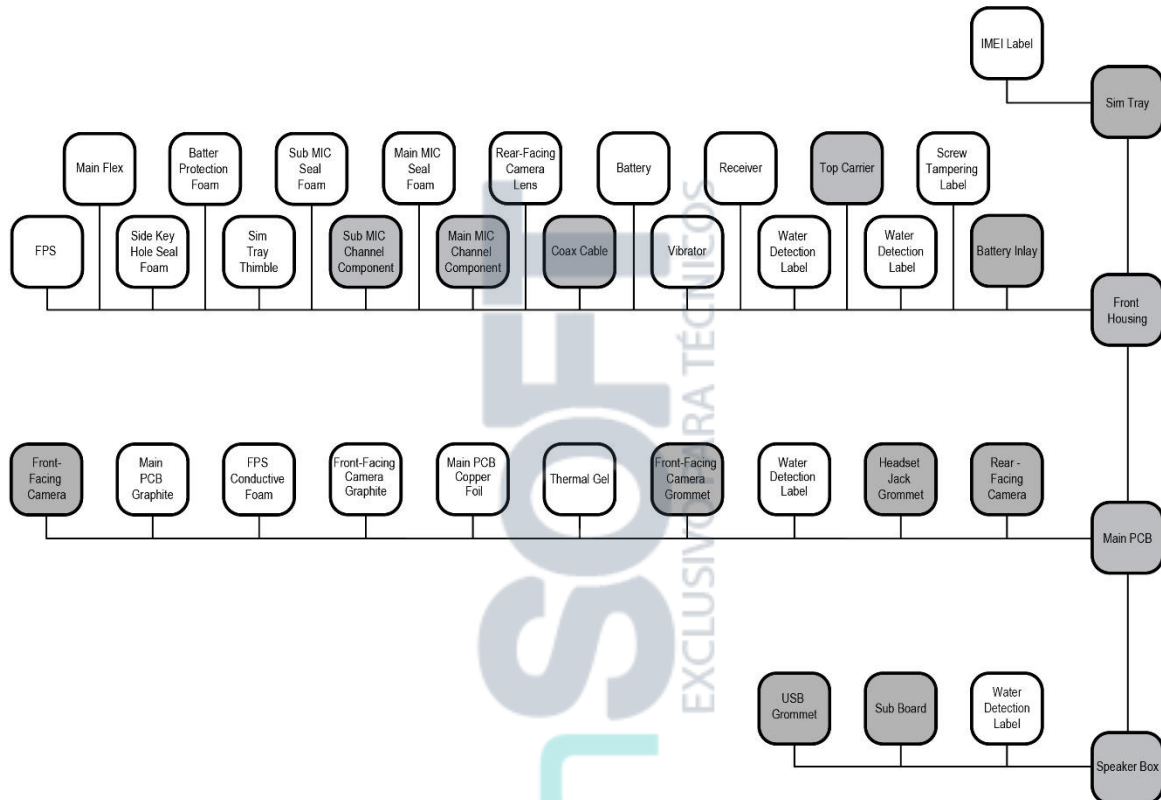
Lenovo Moto G8 Power
Level 2 – Service and Repair Manual

<i>Reference #</i>	<i>Description</i>	<i>Recovery Part</i>
31	Sofia R Adh_FPS &712100511351 CSS	No
32	Sofia R Adh_CamLens_UP &712100511361 CSS	No
33	Sofia R Adh_CamLens_DN &712100511371 CSS	No
34	Sofia R Adh_FlashLens &712100511381 CSS	No
35	WT712100511211+small board adhesive	No
36	WT712100511321+FPC conductive cloth	No
37	WT712300511011+USB sealant sleeve	Yes
38	WT712300511041+headphone sealant sleeve	Yes
39	WT712300511021+proactive sealant sleeve	Yes
40	WT712300511031+retroactive sealant sleeve	Yes
41	WT712400511041+FPS conductive foam	No
42	WT712400511091+main MIC Seal foam_SCH	No
43	WT712400511101+sub MIC Seal foam_SCH	No
44	WT712400511071+Under BOX seal foam_SCH	No
45	WT712400511061+Side key hole seal foam	No
46	WT712400511031+battery protection foam	No
47	WT712100511101+coaxial line mylar	No
49	WT712300511121+SIM Tray thimble	No
-	WT715000511031+heat dissipation film	No
-	WT712100511091+shielding copper foil	No
-	WT712700310121+IMEI label QF	No
-	WT712700341031+waterproof labelFWZ	No

DISASSEMBLY AND RECOVERY

Disassembly and Recovery Map

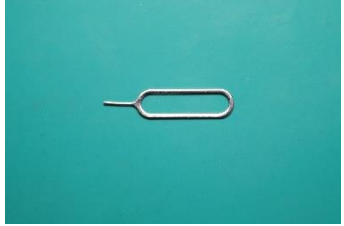
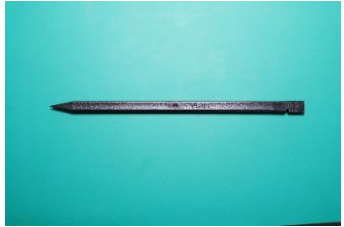



*Shaded parts may be eligible for parts recovery.



Tools Required for Disassembly

The following tools are required to disassemble the Moto G8 Power phone.

<i>Description</i>	<i>Part #</i>	<i>Picture/Drawing</i>
Battery Inlay/Display Removal Fixture	MR-M2-001	
Battery Inlay Removal Insert	MR-M2-001-048	
Heating Plate	3-00-Z3-10000	
3 mm Allen Wrench	--	
Hot Plate	--	
Thin Plastic Spudger	0-00-00-40826	

<i>Description</i>	<i>Part #</i>	<i>Picture/Drawing</i>
SIM/SD Tray Removal Tool	--	
Black Stick	--	
Torque Driver	--	
Shim	4-00-5L-10000	
Torx Bit	--	
Plastic Tweezers	--	--
ESD Mat	--	--
Wrist Strap	--	--
Gloves	--	--

SIM Tray Removal

NOTE

The SIM Tray can be recovered and reused after removal.



1. Power off the device before beginning with the procedure. Use the SIM Tray Removal pin to push into the SIM Tray hole.
2. Press the SIM Tray removal tool to make it pop-out as shown.



3. Use fingers to take out the SIM Tray.

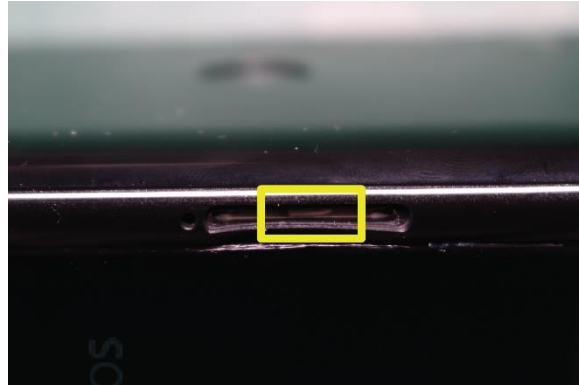


Water Detection Label Inspection

NOTE

If the Water Detection Label (WDL) has been activated, the phone's warranty no longer applies.

Inspect the WDL inside the SIM Tray Slot for signs of activation. Use external light if needed.



Lenovo
EXCLUSIVO PARA TÉCNICOS

IMEI Label Removal

NOTE

Remove the IMEI Label only if necessary. After you remove it, you cannot reuse it.



Use the Plastic Tweezer to remove the IMEI Label from the SIM tray.



Lenovo SOFT EXCLUSIVO PARA TÉCNICOS

Battery Inlay Removal

Preheating for Battery Inlay Removal

NOTE

The Battery Inlay can be recovered and reused after removal.



NOTE

Battery Inlay Removal Methods A and B have the same preheating steps, as shown below.

// CAUTION //

Do not set the Hot Plate temperature higher than 80°C (176°F). Damage to the phone may occur.

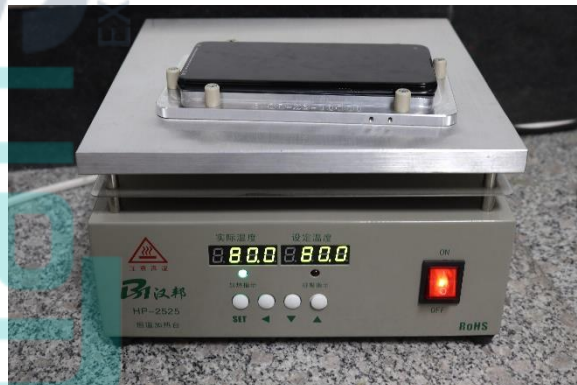
1. Set the Hot Plate to 80°C (176°F).

NOTE

Preheating with an oven is also acceptable if the oven is set to the same temperature.

2. Place the phone on the Heating Plate, with the Battery Inlay side down.

3. Wait 10 minutes for the Battery Inlay Adhesive to warm up.



4. Remove the phone from the Heating Plate or the oven.

// CAUTION //

Wear protective gloves when handling heated phones.

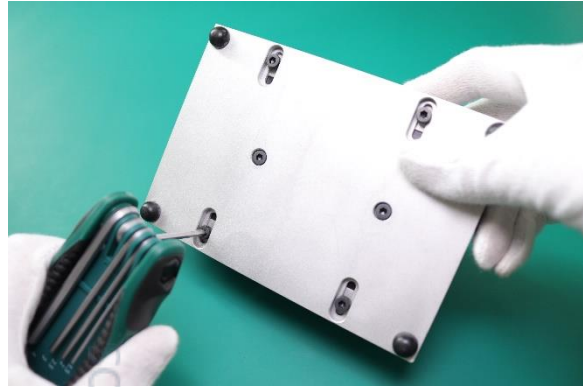
NOTE

Perform the Battery Inlay removal procedure before the phone starts to cool off.

Lenovo SOFT EXCLUSIVO PARA TÉCNICOS

Battery Inlay Removal Method A

1. Use the 3 mm Allen Wrench to loosen the screws holding the side rails on the Battery Inlay Fixture. Do not remove the rails.



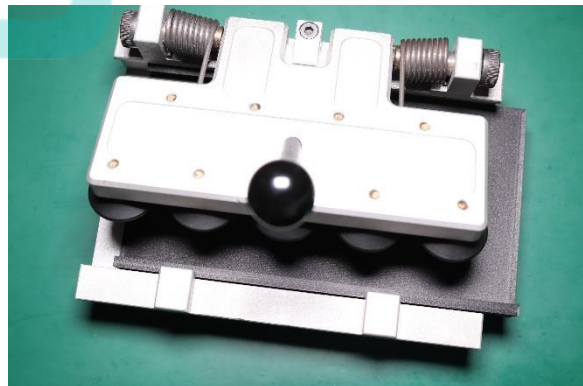
2. Use the 3 mm Allen Wrench to remove the two center screws.



3. Orient the Battery Inlay Removal Insert MR-M2-001-048 in relation to the Display Removal Fixture as shown. Place the Insert in the Battery Removal Fixture.



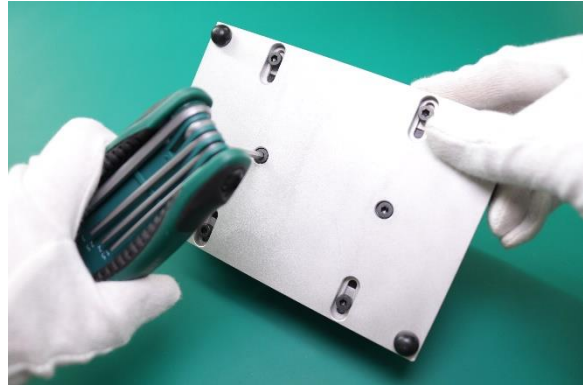
4. Use fingers to lock the Battery Inlay Removal Insert and the Display Removal Fixture as shown.



Lenovo Moto G8 Power

Level 2 – Service and Repair Manual

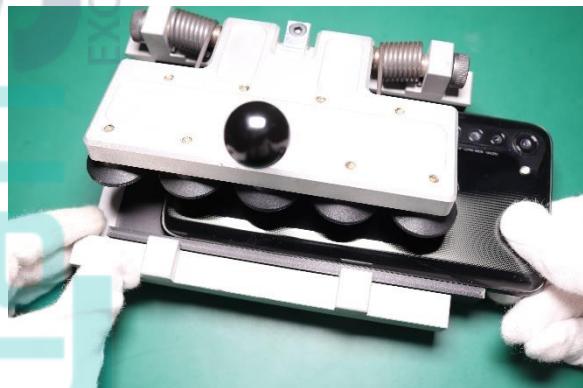
5. Use the 3 mm Allen Wrench on the two center screws to tighten the Display/Battery Inlay Removal Insert into position.



6. Slide both side rails on the Display Removal Fixture firmly against the Battery Inlay Insert. Use the 3 mm Allen Wrench to tighten the four outside screws on the underside of the Display Removal Fixture.



7. Follow preheating steps described on Page 17.
8. Slide the phone into the Battery Removal Fixture as shown. Center the phone in the Fixture.



9. Firmly press the phone into the Insert, face down.



10. Set the heating temperature on the heat gun to 80°C (176°F). Allow the Heat Gun to warm up for 2-3 minutes.

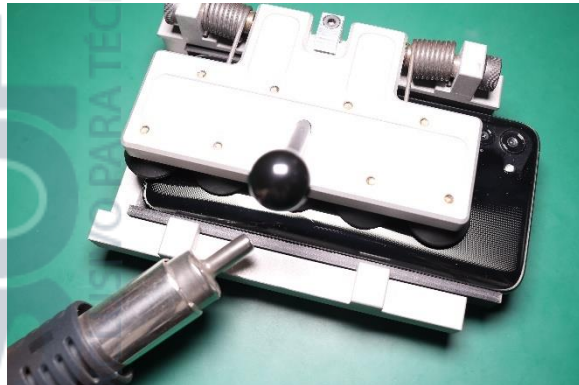
//CAUTION//

Do not set the Heat Gun temperature higher than 80°C (176 °F). Damage to phone may occur.

//CAUTION//

Wear protective gloves while handling heated phones.

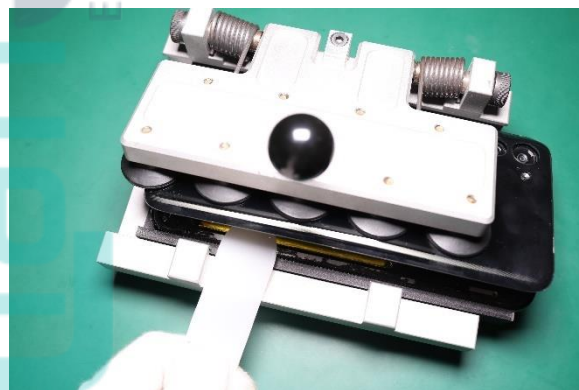
11. Use the Heat Gun to warm the phone edges for about 3 minutes. Keep the Heat Gun in motion to avoid damaging the phone.



NOTE

Begin this step before the phone starts to cool off.

12. As the Battery Inlay begins to release from the phone, use the Thin Plastic Spudger to cut off the Battery Inlay Adhesive along the edges of the phone.



// CAUTION //

Do not insert the Thin Plastic Spudger more than 10 mm to prevent damaging internal components.

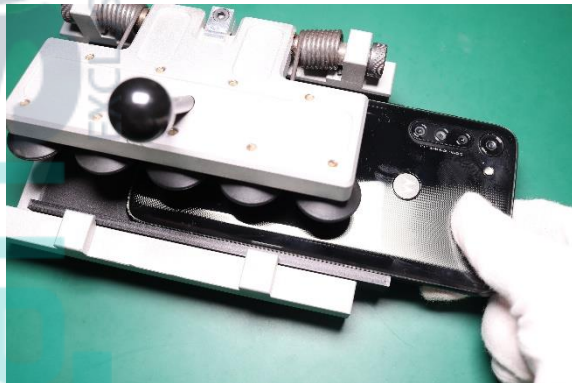
13. Use the Thin Plastic Spudger to gently cut the adhesive from the bottom of the Battery Inlay as shown.



14. Use the Thin Plastic Spudger to break the suction on the suction cups attached to the Battery Inlay.



15. After all the suction cups have been released, carefully slide the phone out of the Battery Removal Fixture.



16. Carefully lift the Battery Inlay from the Front Housing.

Battery Inlay Removal Method B

NOTE

The Battery Inlay can be recovered and reused after removal if it is undamaged.



1. Use the Suction Cup Tool to create a gap between the Battery Inlay and the Front Housing.



2. Use the Thin Plastic Spudger to disengage the Battery Inlay from all the sides of the phone. Start at the point as shown.

//CAUTION//

Do not insert the Thin Plastic Spudger more than 10 mm to prevent damaging internal components.



3. Use the Thin Plastic Spudger to loosen or cut the adhesive holding the Battery Inlay.



4. Move the Thin Plastic Spudger in the direction 1 to 4.

//CAUTION//

The highlighted frame is a weak area. Do not disassemble at this location.



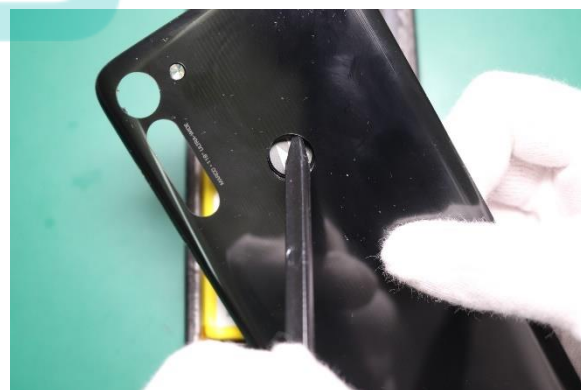
5. Split the Battery Inlay from the phone.

/// WARNING ///

Use care not to disconnect the Fingerprint Sensor (FPS) Flex from the Battery Inlay Cover when removing the Front Housing.



6. Use the flat end of the Black Stick to push out the Finger Print Sensor Flex from the Battery Inlay as shown.



Screw Tampering Label Inspection

NOTE

If a Screw Tampering Label is damaged, the phone's warranty no longer applies.

Inspect the Screw Tampering Labels located on the Top Carrier and Speaker Box as shown. Verify they are correctly placed and examine them for signs of tampering.



Top Carrier Removal

NOTE

The Top Carrier can be recovered and reused after removal.



1. Use the pointed end of the Black Stick to disengage the Finger Print Sensor CONN Cover from the location as shown.



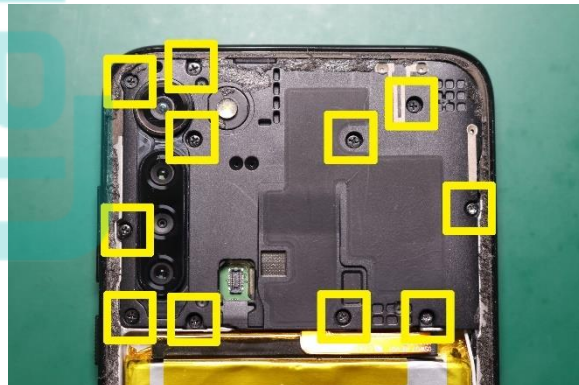
2. Use the flat end of the Black Stick to gently disengage the Finger Print Sensor from the location as shown.



3. Use the Torque Driver with Torx Bit to remove the 11 screws as shown.

/// WARNING ///

The screws cannot be reused after removal.



Lenovo Moto G8 Power

Level 2 – Service and Repair Manual

4. Use the flat end of the Black Stick to lift the Top Carrier from the location as shown.



Lenovo SOFT EXCLUSIVO PARA TÉCNICOS

Water Detection Label Inspection

NOTE

If the Water Detection Label (WDL) has been activated, the phone's warranty no longer applies.

Inspect the WDL, which is visible on the Main PCB. Examine it for signs of activation.



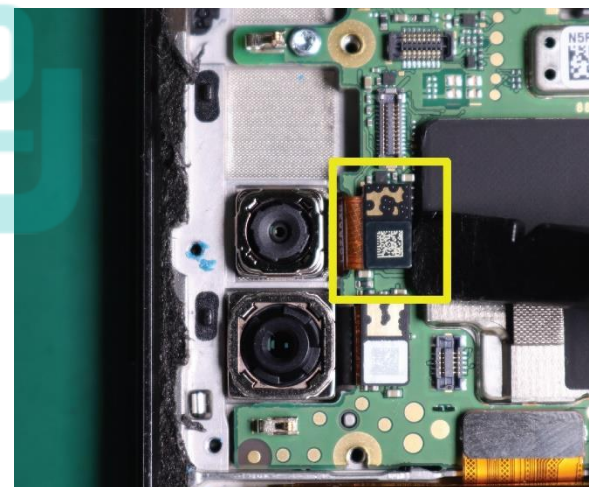
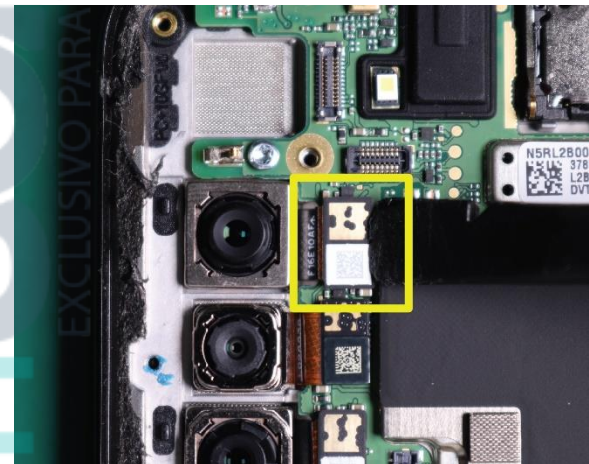
Rear-Facing Camera Removal

NOTE

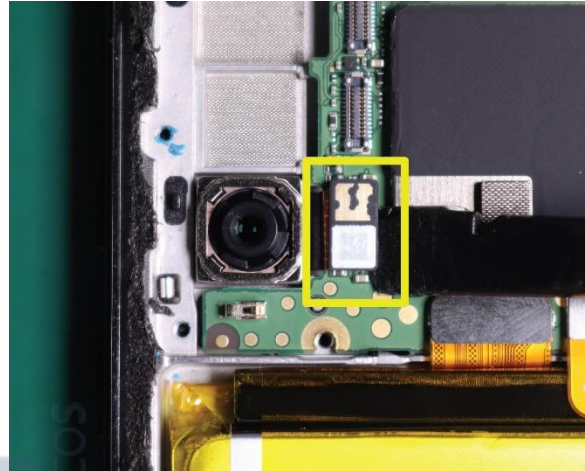
The Rear-Facing Camera can be recovered and reused after removal.



1. Use the flat end of the Black Stick to disengage the Rear-Facing Camera Flex from the location as shown.
2. Use the flat end of the Black Stick to disengage the Rear-Facing Camera Flex from the location as shown.
3. Use the flat end of the Black Stick to disengage the Rear-Facing Camera Flex from the location as shown.



4. Use the flat end of the Black Stick to disengage the Rear-Facing Camera Flex from the location as shown.



5. Use the Plastic Tweezer to remove the Rear-Facing Camera Grommet from the location as shown.



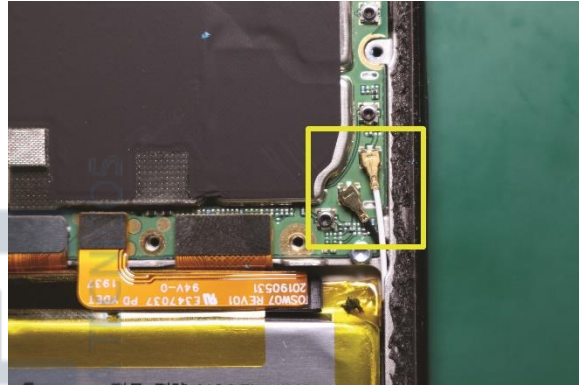
Main PCB Removal

NOTE

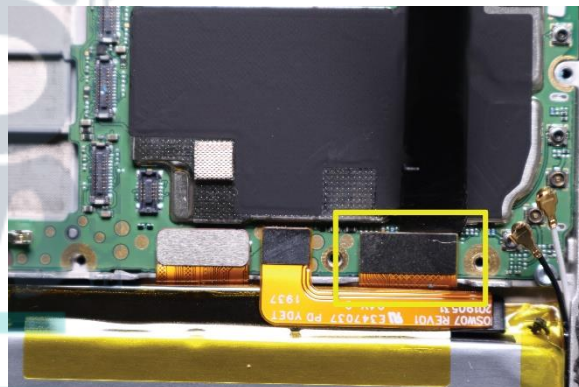
The Main PCB can be recovered and reused after removal.



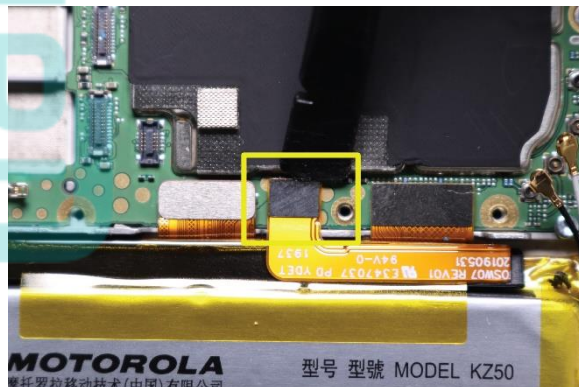
1. Use the Plastic Tweezer to remove the Coax Cables from the location as shown.



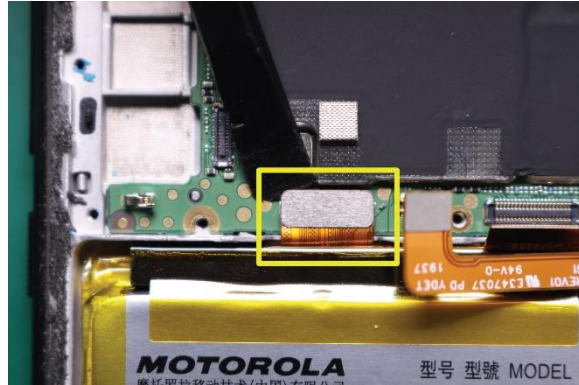
2. Use the flat end of the Black Stick to gently disengage the Display BtB Connector from the Main PCB as shown.



3. Use the flat end of the Black Stick to gently disengage the Battery BtB Connector from the Main PCB as shown.



4. Use the flat end of the Black Stick to gently disengage the Main Flex BtB Connector from the Main PCB as shown.



5. Use the Torque Driver with Torx Bit to remove the screws as shown.

/// WARNING ///

The screw cannot be reused after removal.



6. Use the flat end of the Black Stick to lift the Main PCB from the location as shown.



Water Detection Label Inspection

NOTE

If the Water Detection Label (WDL) has been activated, the phone's warranty no longer applies.

Inspect the WDL, which is visible on the Front-Housing. Examine it for signs of activation.



Front-Facing Camera Removal

NOTE

The Front-Facing Camera can be recovered and reused after removal.



1. Use the flat end of the Black Stick to gently disengage and remove the Front-Facing Camera as shown.
2. Use the Plastic Tweezer to remove the Front-Facing Camera Grommet from the location as shown.



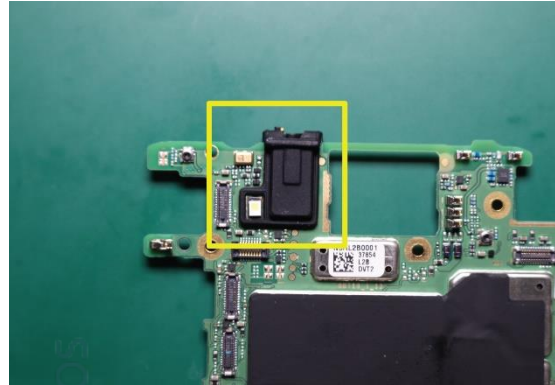
Headset Jack Grommet Removal

NOTE

The Headset Jack Grommet can be recovered and reused after removal.



Use the Plastic Tweezer to remove the Headset Jack Grommet from the location as shown.



Lenovo SOFT EXCLUSIVO PARA TÉCNICOS

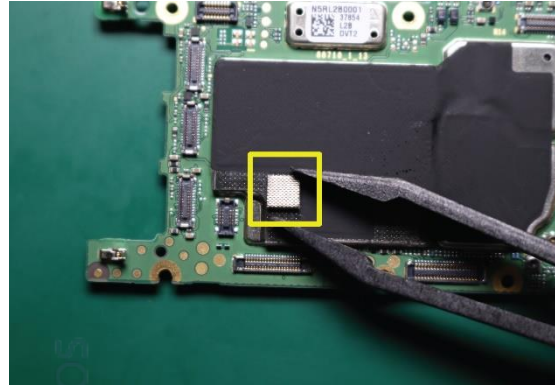
Finger Print Sensor Conductive Foam Removal

NOTE

After you remove the Finger Print Sensor Conductive Foam, you cannot reuse it.



Use the Plastic Tweezer to remove the Finger Print Sensor Conductive Foam from the Main PCB as shown.



Lenovo SOFT
EXCLUSIVO PARA TÉCNICOS

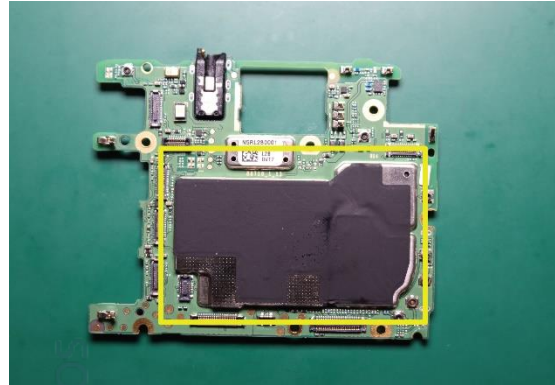
Main PCB Graphite Removal

NOTE

After you remove the Main PCB Graphite, you cannot reuse it.



Use the Plastic Tweezer to remove the Main PCB Graphite from the Main PCB as shown.



Lenovo SOFT EXCLUSIVO PARA TÉCNICOS

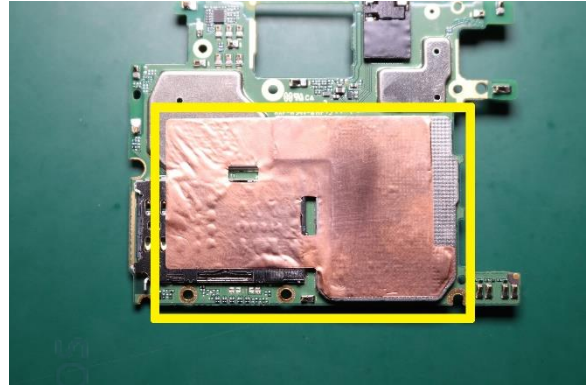
Main PCB Copper Foil Removal

NOTE

After you remove the Main PCB Copper Foil, you cannot reuse it.



Use the Plastic Tweezer to remove the Main PCB Copper Foil from the Main PCB as shown.



Lenovo SOFT EXCLUSIVO PARA TÉCNICOS

Receiver Removal

NOTE

Remove the Receiver only if necessary. After you remove it, you cannot reuse it.



1. Use the flat end of the Black Stick to lift the Receiver from the location as shown.
2. Remove the Receiver from the phone.



Lenovo SOFT EXCLUSIVO PARA TÉCNICOS

Speaker Box Removal

NOTE

The Speaker Box can be recovered and reused after removal.



1. Use the Torque Driver with Torx Bit to remove the eight screws as shown.

/// WARNING ///

The screws cannot be reused after removal.

2. Use the flat end of the Black Stick to lift the Speaker Box as shown.

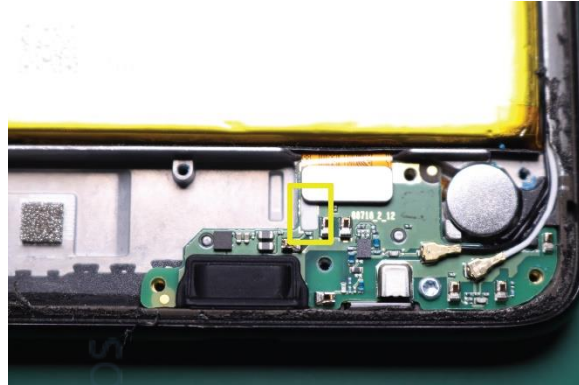


Water Detection Label Inspection

NOTE

If the Water Detection Label (WDL) has been activated, the phone's warranty no longer applies.

Inspect the WDL, which is visible on the Sub Board. Examine it for signs of activation.



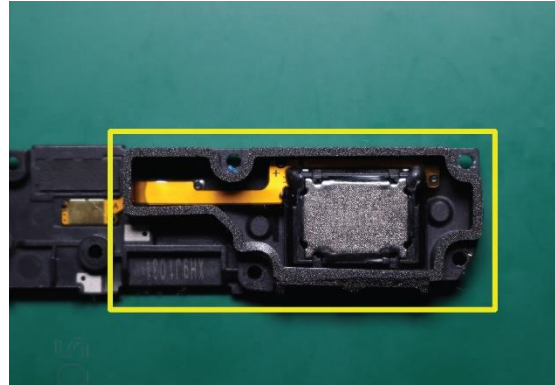
Speaker Box Foam Removal

NOTE

After you remove the Speaker Box Foam, you cannot reuse it.



Use the Plastic Tweezer to remove the Speaker Box Foam from the Speaker Box as shown.



Lenovo
EXCLUSIVO PARA TÉCNICOS

Sub Board Removal

NOTE

The Sub Board can be recovered and reused after removal.



1. Use the Plastic Tweezer to remove the Coax Cables as shown.



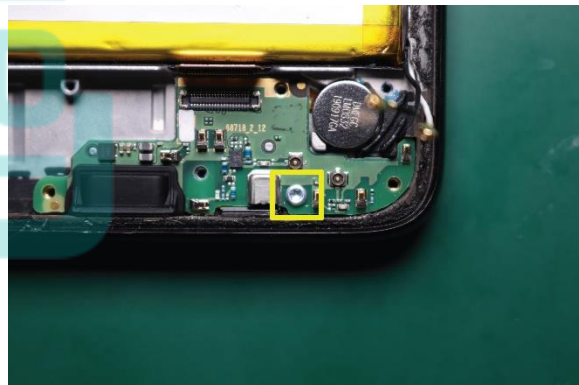
2. Use the flat end of the Black Stick to carefully disengage the Main Flex BtB Connector from the location on the Sub Board as shown.



3. Use the Torque Driver with Torx Bit to remove the white screw as shown.

/// WARNING ///

The screw cannot be reused after removal.



Lenovo Moto G8 Power
Level 2 – Service and Repair Manual

4. Use the flat end of the Black Stick to gently lift the Sub Board from the location as shown.



Lenovo SOFT
EXCLUSIVO PARA TÉCNICOS

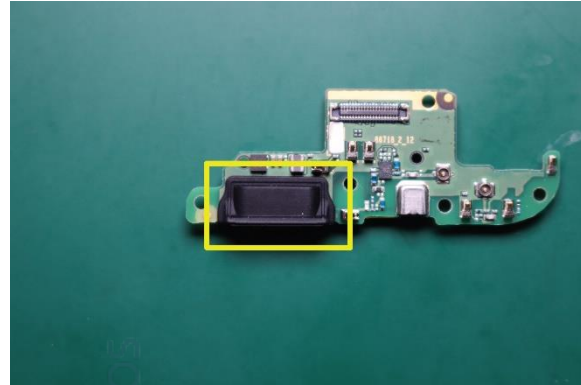
USB Grommet Removal

NOTE

The USB Grommet can be recovered and reused after removal.



Use the Plastic Tweezer to remove the USB Grommet from the Sub Board as shown.



Lenovo SOFT EXCLUSIVO PARA TÉCNICOS

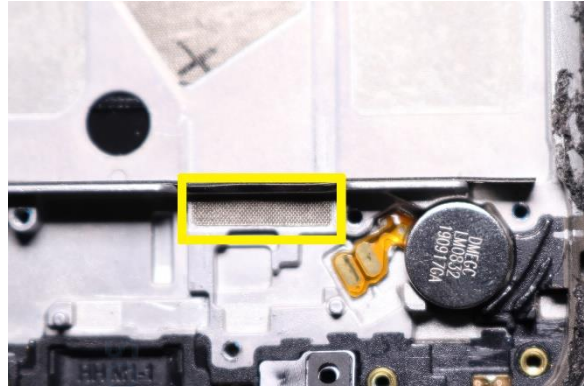
Sub Board Adhesive Removal

NOTE

After you remove the Sub Board Adhesive, you cannot reuse it.



Use the Plastic Tweezer to remove the Sub Board Adhesive from the location as shown.



Lenovo SOFT
EXCLUSIVO PARA TÉCNICOS

Vibrator Removal

NOTE

Remove the Vibrator only if necessary.
After you remove it, you cannot reuse it.



Use the pointed end of the Black Stick to gently disengage the Vibrator from the location as shown.



Lenovo SOFT EXCLUSIVO PARA TÉCNICOS

Battery Removal

/// WARNING ///

Failure to adhere to Safety Critical Note(s) may increase risk of rupture, burning, or failure to function safely when used by the customer. Refer to the Battery Safety Guidelines.

NOTE

Remove the Battery only if it is defective or damaged. After you remove it, you cannot reuse it.



// CAUTION //

Handle the Battery Pack with care. If dropped on the floor, it may be internally damaged and must be scrapped.

Ensure Battery and its insulation are not damaged (e.g. scratched, dented, punctured) prior to and through assembly.

Prior to assembly, ensure Battery edges and surfaces are not dented or deformed, and that fixtures and parts that will contact the Battery are free of foreign material.

Ensure screws and screwdrivers do not contact the Battery.

1. Set the temperature of the Hot Plate to 80°C (176°F).

// CAUTION //

Do not set the Hot Plate temperature higher than 80°C (176°F). Damage to the phone may occur.

NOTE

Preheating with an oven is also acceptable if the oven is set to the same temperature.

2. Place the phone on the Hot Plate, with the Display side down.



3. Wait 10 minutes for the adhesive to warm up.

Lenovo Moto G8 Power

Level 2 – Service and Repair Manual

4. Use the Thin Plastic Spudger to cut the adhesives from the top of the Battery.



5. Use the Thin Plastic Spudger to cut the adhesives from the side of the Battery.



6. Use fingers to carefully lift the Battery.



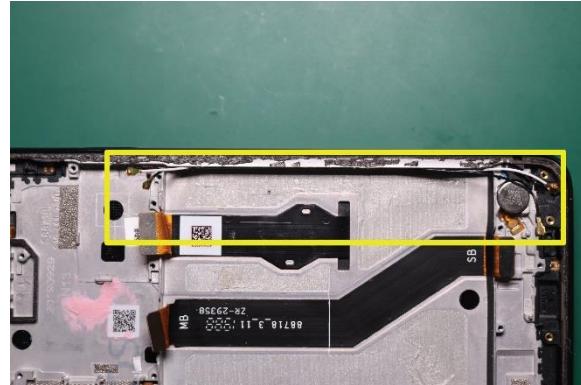
Coax Cable Removal

NOTE

The Coax Cables can be recovered and reused after removal.



Use fingers to remove the Coax Cable from the pocket on the recess of the phone.



Lenovo SOFT EXCLUSIVO PARA TÉCNICOS

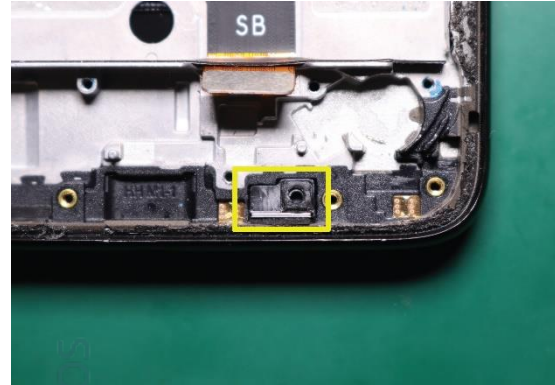
Primary MIC Channel Component Removal

NOTE

The Main MIC Channel Component can be recovered and reused after removal.



Use the Plastic Tweezer to remove the Main MIC Channel Component from the location as shown.



Lenovo SOFT EXCLUSIVO PARA TÉCNICOS

Primary MIC Seal Foam Removal

NOTE

After you remove the Primary MIC Seal Foam, you cannot reuse it.



Use the Plastic Tweezer to remove the Main MIC Seal Foam from the location as shown.



Lenovo SOFT EXCLUSIVO PARA TÉCNICOS

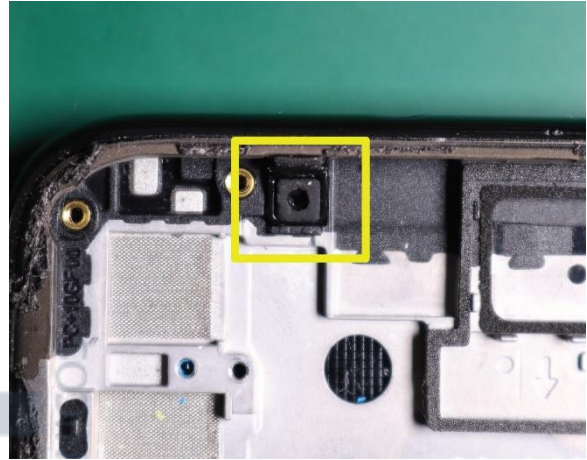
Secondary MIC Channel Component Removal

NOTE

The Sub MIC Channel Component can be recovered and reused after removal.



Use the Plastic Tweezer to remove the Secondary MIC Channel Component from the location as shown.



Secondary MIC Seal Foam Removal

NOTE

After you remove the Secondary MIC Seal Foam, you cannot reuse it.



Use the Plastic Tweezer to remove the Secondary MIC Seal Foam from the location as shown.



Lenovo SOFT EXCLUSIVO PARA TÉCNICOS

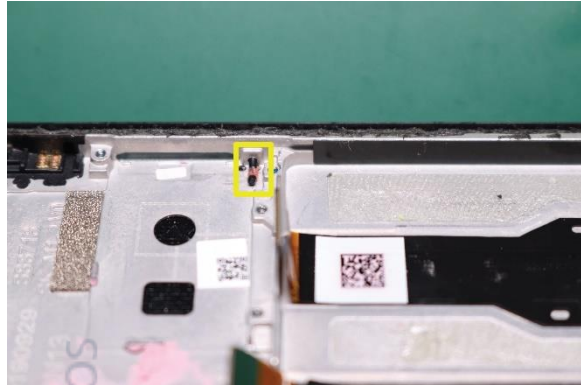
Sim Tray Thimble Removal

NOTE

After you remove the Sim Tray Thimble, you cannot reuse it.



Use the Plastic Tweezer to remove the Sim Tray Thimble from the location as shown.



Lenovo SOFT
EXCLUSIVO PARA TÉCNICOS

Battery Protection Foam Removal

NOTE

After you remove the Battery Protection Foam, you cannot reuse it.



Use the Plastic Tweezer to remove the Battery Protection Foam from the location as shown.



Lenovo SOFT
EXCLUSIVO PARA TÉCNICOS

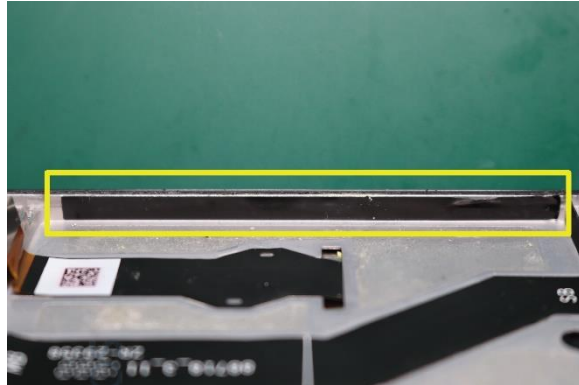
Coaxial Cable line Mylar Removal

NOTE

After you remove the Coaxial Cable Line Mylar, you cannot reuse it.



Use the Plastic Tweezer to remove the Coaxial Cable Line Mylar from the location as shown.



Lenovo SOFT EXCLUSIVO PARA TÉCNICOS

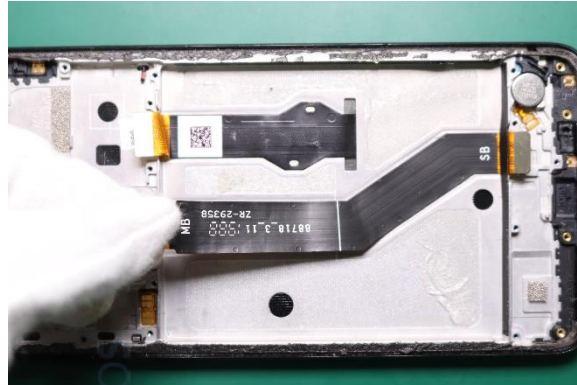
Main Flex Removal

NOTE

After you remove the Main Flex you cannot reuse it.



Use fingers to gently peel off the Main Flex as shown.



Lenovo SOFT EXCLUSIVO PARA TÉCNICOS

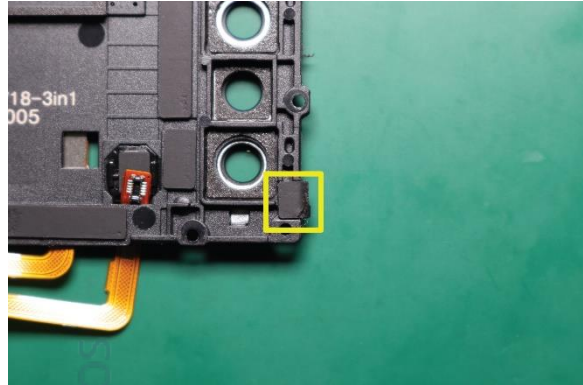
Side Key Hole Seal Foam Removal

NOTE

After you remove the Side Key Hole Seal Foam, you cannot reuse it.



Use the Plastic Tweezer to remove the Side Key Hole Seal Foam from the location as shown.



Lenovo SOFT EXCLUSIVO PARA TÉCNICOS

Rear-Facing Camera Lens Removal

NOTE

Remove the Rear-Facing Camera Lens only if it is defective or damaged.




1. Use the pointed end of the Black Stick to carefully disengage and push out the Rear-Facing Camera Lens from the location as shown.
2. Use the pointed end of the Black Stick to carefully disengage and push out the Rear-Facing Camera Lens from the location as shown.



PARTS REFRESH

Tools Required for Parts Refresh

The following tools are required for parts refresh of the Moto G8 Power phone.

<i>Description</i>	<i>Part #</i>	<i>Image</i>
Plastic Tweezers	--	--
Black Stick	--	
ESD Mat	--	--
Wrist Strap	--	--
Isopropyl (ISP) Alcohol	--	--
Cotton Swabs	--	--
Cleaning Pads	--	--
Gloves or Finger Collets	--	--

Battery Inlay Cleaning

Use the ISP Alcohol and Cotton Swabs to remove all the adhesives on the Battery Inlay as shown.

/// CAUTION ///

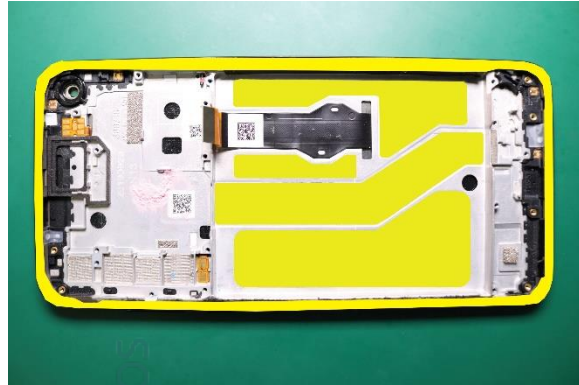
Remove the adhesive carefully to avoid damage to the Battery Inlay.



Lenovo SOFT EXCLUSIVO PARA TÉCNICOS

Front Housing Cleaning

Use the Cotton Swabs with ISP Alcohol to remove all the adhesives from the location as shown.



Lenovo SOFT EXCLUSIVO PARA TÉCNICOS

Top Carrier Cleaning

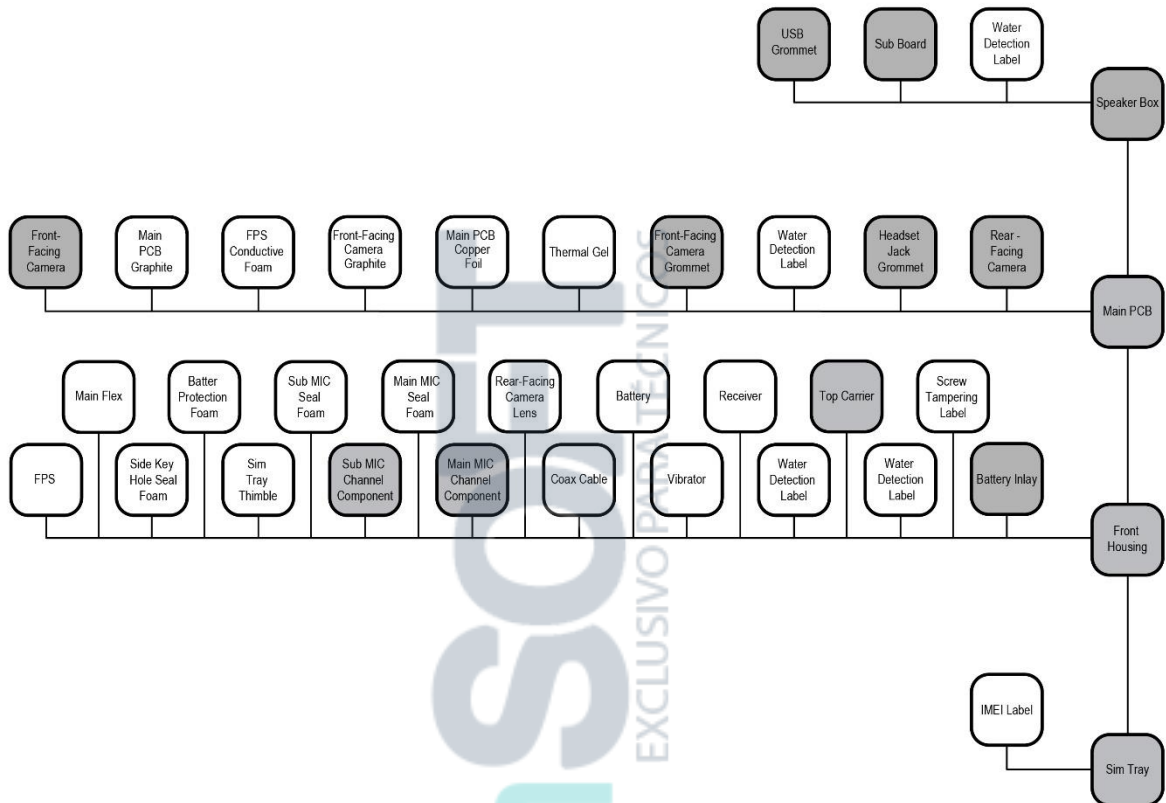
Use the Cotton Swabs with ISP Alcohol to remove all the adhesives from the location as shown.



Lenovo SOFT EXCLUSIVO PARA TÉCNICOS







ASSEMBLY

Assembly Map



Tools Required for Assembly

The following tools are required to assemble the Moto One Vision phone.

<i>Description</i>	<i>Part #</i>	<i>Picture/Drawing</i>
Black Stick	--	
Torque Driver	--	
Torx Bit	--	
Battery Inlay Press	3-00-Z2-10000	
Fixture Press	19501980	
Manual Roller	--	
Plastic Tweezers	--	--
Tweezers	--	--

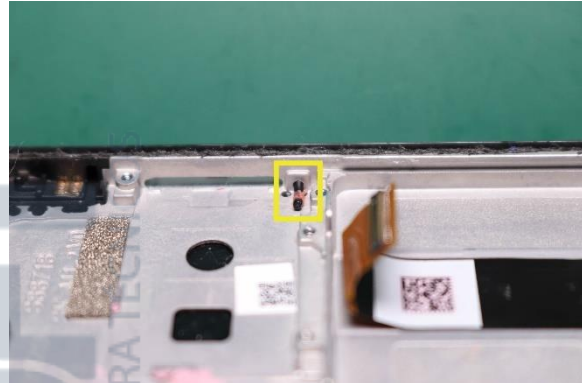
<i>Description</i>	<i>Part #</i>	<i>Picture/Drawing</i>
Gloves or Finger Collets	--	--

Lenovo SOFT
EXCLUSIVO PARA TÉCNICOS

Sim Tray Thimble Assembly

<i>Description</i>	<i>Reference #</i>
Sofia R FRU TP LCM Assy Vulcan Sofia R FRU TP LCM Assy Bermuda	1
WT712300511121+SIM Tray thimble	49

Use the Plastic Tweezer to place Sim Tray Thimble on the location as shown.



Water Detection Label Assembly

Description	Reference #
Sofia R FRU TP LCM Assy Vulcan Sofia R FRU TP LCM Assy Bermuda	1
WT712700341031+waterproof labelFWZ	-

Use the Plastic Tweezer to place the Water Detection Label (WDL) on the location as shown.



Sub Board Adhesive Assembly

<i>Description</i>	<i>Reference #</i>
Sofia R FRU TP LCM Assy Vulcan Sofia R FRU TP LCM Assy Bermuda	1
WT712100511211+small board adhesive	35

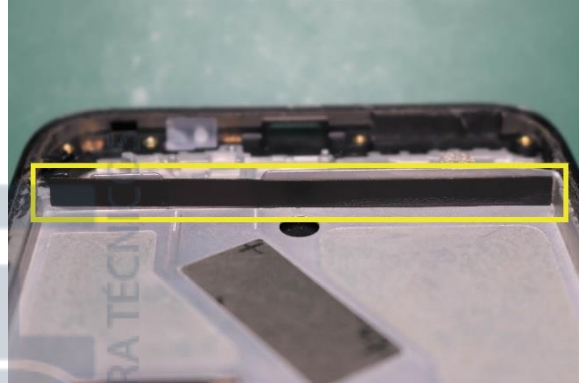
Use fingers to place and secure the Sub Board Adhesive on the location as shown and peel off the liner as shown.



Battery Protection Foam Assembly

<i>Description</i>	<i>Reference #</i>
Sofia R FRU TP LCM Assy Vulcan Sofia R FRU TP LCM Assy Bermuda	1
WT712400511031+battery protection foam	46

Use the Plastic Tweezer to place and secure the Battery Protection Foam on the location as shown.



Primary MIC Foam Assembly

Description	Reference #
WT712400511091+main MIC Seal foam_SCH	42

Use the Plastic Tweezer to place and secure the Primary MIC Foam on the location as shown.



Primary MIC Channel Component Assembly

<i>Description</i>	<i>Reference #</i>
Sofia R FRU TP LCM Assy Vulcan Sofia R FRU TP LCM Assy Bermuda	1
WT712300511101+main MIC channel component	26

Use the Plastic Tweezer to place the Primary MIC Channel Component on the location as shown.



Secondary MIC Foam Assembly

Description	Reference #
WT712400511101+sub MIC Seal foam_SCH	43

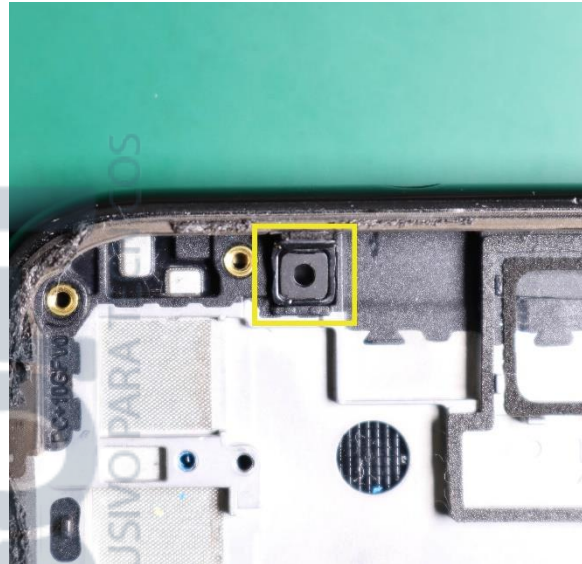
Use the Plastic Tweezer to place and secure the Secondary MIC Foam on the location as shown.



Secondary MIC Channel Component Assembly

<i>Description</i>	<i>Reference #</i>
Sofia R FRU TP LCM Assy Vulcan Sofia R FRU TP LCM Assy Bermuda	1
WT712300511111+sub MIC channel component	25

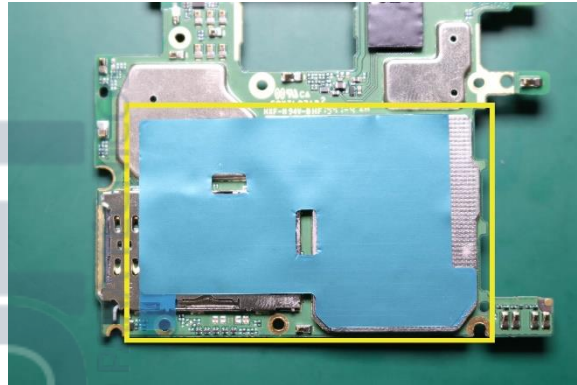
Use the Plastic Tweezer to place and secure the Secondary MIC Channel Component on the location as shown.



Main PCB Copper Foil Assembly

<i>Description</i>	<i>Reference #</i>
ASSY,BD KIT,Sofia R BR 4+64G Sofia R FRU MB LATAM 4+64G DS Sofia R FRU MB LATAM 4+64G SS Sofia R FRU MB ROW 4+64G DS	2
WT712100511091+shielding copper foil	-

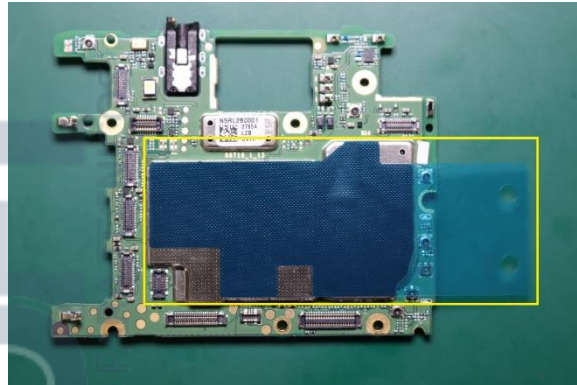
Use the Plastic Tweezer to place and secure the Main PCB Copper Foil on the Main PCB as shown and peel off the liner.



Main PCB Graphite Assembly

Description	Reference #
ASSY,BD KIT,Sofia R BR 4+64G Sofia R FRU MB LATAM 4+64G DS Sofia R FRU MB LATAM 4+64G SS Sofia R FRU MB ROW 4+64G DS	2
WT715000511031+heat dissipation film	-

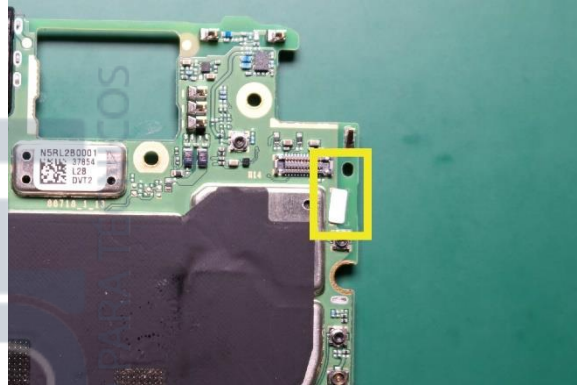
Use the Plastic Tweezer to place and secure the Main PCB Graphite on the Main PCB as shown and peel off the liner.



Water Detection Label Assembly

Description	Reference #
ASSY,BD KIT,Sofia R BR 4+64G Sofia R FRU MB LATAM 4+64G DS Sofia R FRU MB LATAM 4+64G SS Sofia R FRU MB ROW 4+64G DS	2
WT712700341031+waterproof labelFWZ	-

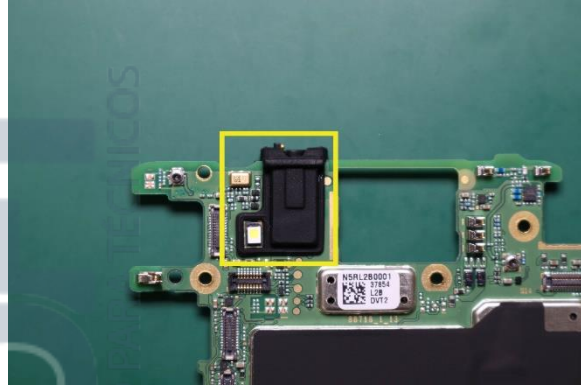
Use the Plastic Tweezer to place the Water Detection Label (WDL) on the Main PCB as shown.



Headset Jack Grommet Assembly

Description	Reference #
ASSY,BD KIT,Sofia R BR 4+64G Sofia R FRU MB LATAM 4+64G DS Sofia R FRU MB LATAM 4+64G SS Sofia R FRU MB ROW 4+64G DS	2
WT712300511041+headphone sealant sleeve	38

Use the Plastic Tweezer to place the Headset Jack Grommet on the location as shown.



Main PCB Assembly

<i>Description</i>	<i>Reference #</i>
Sofia R FRU TP LCM Assy Vulcan Sofia R FRU TP LCM Assy Bermuda	1
WT710920001211+screw WHT	21
ASSY,BD KIT,Sofia R BR 4+64G Sofia R FRU MB LATAM 4+64G DS Sofia R FRU MB LATAM 4+64G SS Sofia R FRU MB ROW 4+64G DS	2

1. Use fingers to place the Main PCB on the location as shown.



2. Use Torque Driver with Torx Bit to tighten the two screws as shown.



Front-Facing Camera Grommet Assembly

Description	Reference #
WT712300511021+proactive sealant sleeve	39

Use the Plastic Tweezer to place the Front-Facing Camera Grommet on the location as shown.



Front-Facing Camera Assembly

<i>Description</i>	<i>Reference #</i>
Sofia R FRU TP LCM Assy Vulcan Sofia R FRU TP LCM Assy Bermuda	1
ASSY,BD KIT,Sofia R BR 4+64G Sofia R FRU MB LATAM 4+64G DS Sofia R FRU MB LATAM 4+64G SS Sofia R FRU MB ROW 4+64G DS	2
MDL,CAMR,16M,sofia;Front;F16A1QAA;Q Tech	6

Use fingers to place the Front-Facing Camera on the Main PCB as shown.



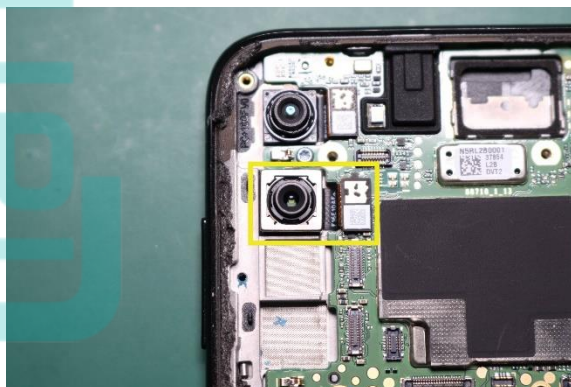
Rear-Facing Camera Assembly

<i>Description</i>	<i>Reference #</i>
Sofia R FRU TP LCM Assy Vulcan Sofia R FRU TP LCM Assy Bermuda	1
ASSY,BD KIT,Sofia R BR 4+64G Sofia R FRU MB LATAM 4+64G DS Sofia R FRU MB LATAM 4+64G SS Sofia R FRU MB ROW 4+64G DS	2
MDL,CAMR,8M,F4H7YCC	7
MDL,CAMR,16M,sofia;after16M;F16E10AF;Q T	8
MDL,CAMR,2M,sofia;after2M;L02AA30;Ofilm	9
MDL,CAMR,8M,AF,sofia row;front8M;F8856DG	10

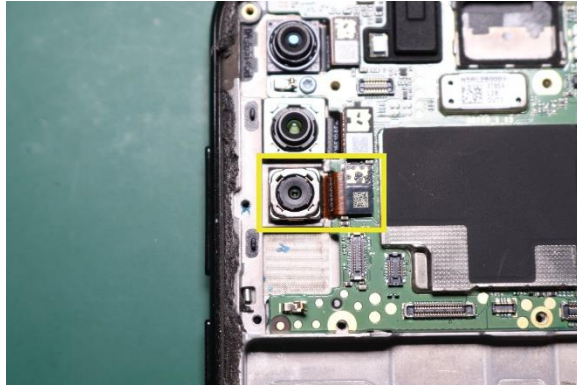
1. Use fingers to place and secure the Rear-Facing Camera on the Main PCB as shown.



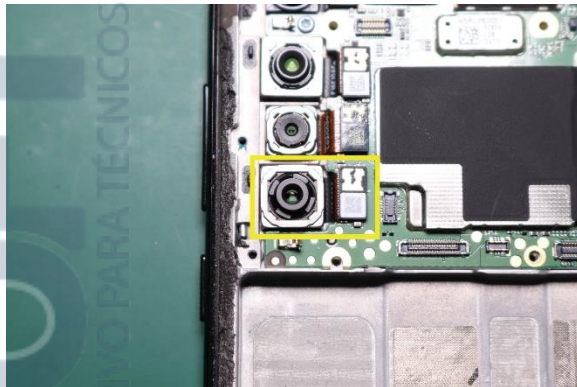
2. Use fingers to place and secure the Rear-Facing Camera on the Main PCB as shown.



3. Use fingers to place and secure the Rear-Facing Camera on the Main PCB as shown.



4. Use fingers to place and secure the Rear-Facing Camera on the Main PCB as shown.



Receiver Assembly

<i>Description</i>	<i>Reference #</i>
Sofia R FRU TP LCM Assy Vulcan Sofia R FRU TP LCM Assy Bermuda	1
ASSY,BD KIT,Sofia R BR 4+64G Sofia R FRU MB LATAM 4+64G DS Sofia R FRU MB LATAM 4+64G SS Sofia R FRU MB ROW 4+64G DS	2
WT+710324100291+ Speaker	12

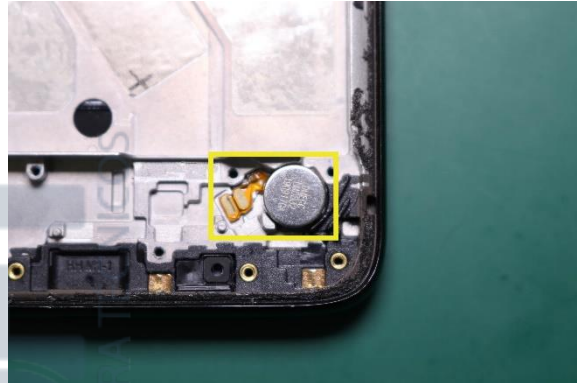
Use the Plastic Tweezer to place the Receiver on the location aligning with the pins as shown.



Vibrator Assembly

<i>Description</i>	<i>Reference #</i>
Sofia R FRU TP LCM Assy Vulcan Sofia R FRU TP LCM Assy Bermuda	1
WT+710613000331+motor	16

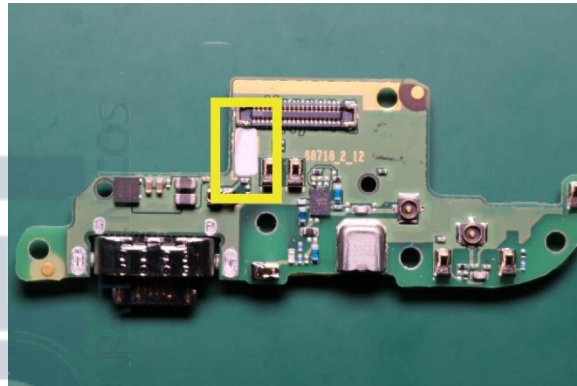
Use the Plastic Tweezer to place and secure the
Vibrator on the location as shown.



Water Detection Label Assembly

Description	Reference #
ASSY,DTR BRD,Sofia R BR 4+64G Sofia R FRU Sub BD LATAM Sofia R FRU Sub BD ROW	3
WT712700341031+waterproof labelFWZ	-

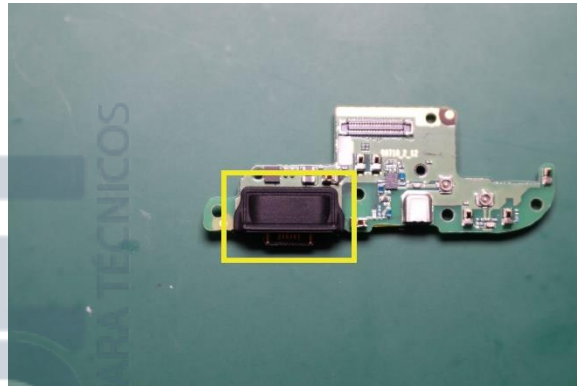
Use the Plastic Tweezer to place the Water Detection Label (WDL) on the Sub Board as shown.



USB Grommet Assembly

Description	Reference #
ASSY,DTR BRD,Sofia R BR 4+64G Sofia R FRU Sub BD LATAM Sofia R FRU Sub BD ROW	3
WT712300511011+USB sealant sleeve	37

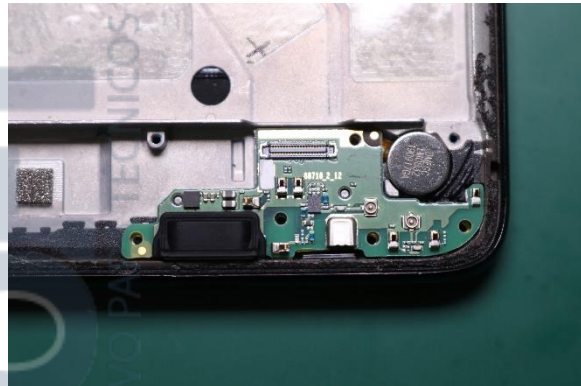
Use the Plastic Tweezer to place and secure the USB Grommet on the Sub Board as shown.



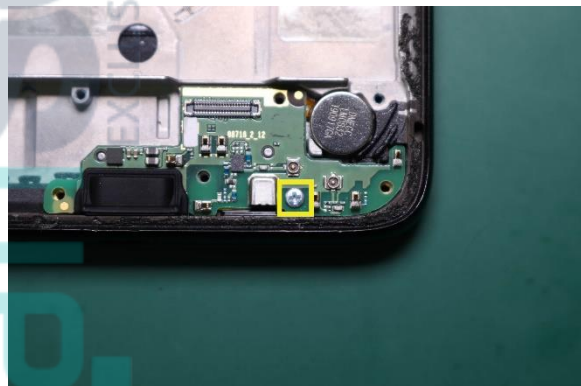
Sub Board Assembly

<i>Description</i>	<i>Reference #</i>
Sofia R FRU TP LCM Assy Vulcan Sofia R FRU TP LCM Assy Bermuda	1
WT710920001211+screw WHT	21
ASSY,DTR BRD,Sofia R BR 4+64G Sofia R FRU Sub BD LATAM Sofia R FRU Sub BD ROW	3

1. Use fingers to place the Sub Board on the location as shown.



2. Use the Torque Driver with Torx Bit to tighten the white screw as shown.



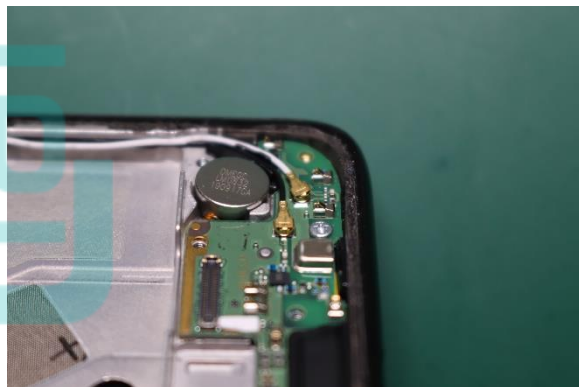
Coax Cable Assembly

<i>Description</i>	<i>Reference #</i>
Sofia R FRU TP LCM Assy Vulcan Sofia R FRU TP LCM Assy Bermuda	1
ASSY,BD KIT,Sofia R BR 4+64G Sofia R FRU MB LATAM 4+64G DS Sofia R FRU MB LATAM 4+64G SS Sofia R FRU MB ROW 4+64G DS	2
ASSY,DTR BRD,Sofia R BR 4+64G Sofia R FRU Sub BD LATAM Sofia R FRU Sub BD ROW	3
WT715302001621+coaxial line 2	18
WT715302001611+coaxial line 1	19

1. Use the Plastic Tweezer to place the two Coax Cables on the Main PCB as shown.



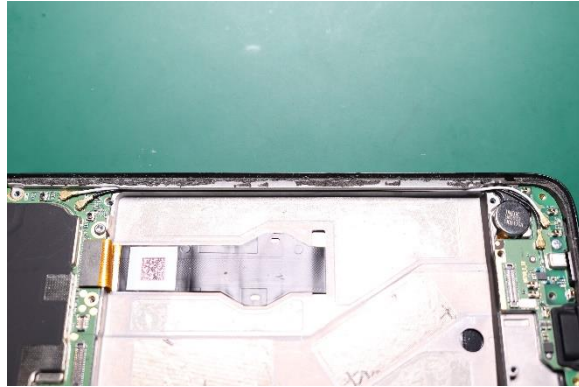
2. Use the Plastic Tweezer to place the two Coax Cables on the Sub Board as shown.



3. Use fingers to place and secure the two Coax Cables in the pocket on the recess of the phone.

NOTE

Make sure the Black Coax Cable is placed above the White Coax Cable.

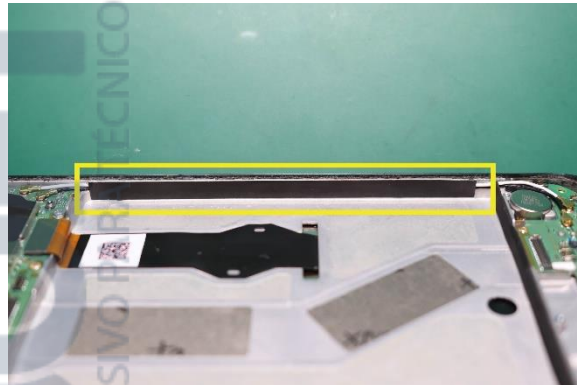


Lenovo SOFT EXCLUSIVO PARA TÉCNICOS

Coaxial Cable Protective Mylar Assembly

<i>Description</i>	<i>Reference #</i>
Sofia R FRU TP LCM Assy Vulcan Sofia R FRU TP LCM Assy Bermuda	1
ASSY,BD KIT,Sofia R BR 4+64G Sofia R FRU MB LATAM 4+64G DS Sofia R FRU MB LATAM 4+64G SS Sofia R FRU MB ROW 4+64G DS	2
WT712100511101+coaxial line mylar	47

Use the Plastic Tweezer to place the Coaxial Cable Protective Mylar on the location as shown.



Main FPC Adhesive Assembly

<i>Description</i>	<i>Reference #</i>
Sofia R FRU TP LCM Assy Vulcan Sofia R FRU TP LCM Assy Bermuda	1
WT712100511321+FPC conductive cloth	36

Use fingers to place and secure the Main FPC Adhesive on the location as shown and peel off the liner.



Battery Adhesive Assembly

<i>Description</i>	<i>Reference #</i>
Sofia R FRU TP LCM Assy Vulcan Sofia R FRU TP LCM Assy Bermuda	1
WT712100511051+battery gum 3_SCH	28
WT712100511041+battery gum 2_SCH	29
WT712100511031+battery gum 1_SCH	30

Use fingers to place and secure the Battery Adhesive on the location as shown and peel off the liner.



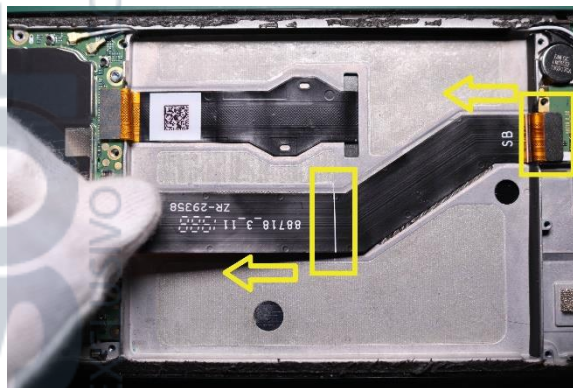
Main Flex Assembly

Description	Reference #
Sofia R FRU TP LCM Assy Vulcan Sofia R FRU TP LCM Assy Bermuda	1
ASSY,BD KIT,Sofia R BR 4+64G Sofia R FRU MB LATAM 4+64G DS Sofia R FRU MB LATAM 4+64G SS Sofia R FRU MB ROW 4+64G DS	2
ASSY,DTR BRD,Sofia R BR 4+64G Sofia R FRU Sub BD LATAM Sofia R FRU Sub BD ROW	3
WT713300511011+FPC component	14

1. Use fingers to carefully place the Main Flex on the phone as shown, sticky side down.

NOTE

Be sure the marking on the Main Flex is oriented in relation to the Front Housing as shown.



2. Use fingers to place and secure the Main Flex BtB Connector and Display Flex BtB Connector on the Main PCB as shown.



Battery Assembly

<i>Description</i>	<i>Reference #</i>
Sofia R FRU TP LCM Assy Vulcan Sofia R FRU TP LCM Assy Bermuda	1
ASSY,BD KIT,Sofia R BR 4+64G Sofia R FRU MB LATAM 4+64G DS Sofia R FRU MB LATAM 4+64G SS Sofia R FRU MB ROW 4+64G DS	2
ASSY,DTR BRD,Sofia R BR 4+64G Sofia R FRU Sub BD LATAM Sofia R FRU Sub BD ROW	3
ACCY,BAT,BAT 5000mAH KZ50 ATL536580 ATL	11

/// WARNING ///

Failure to adhere to Safety Critical Note(s) may increase risk of rupture, burning, or failure to function safely when used by the customer. Refer to the Battery Safety Guidelines.

// CAUTION //

Handle the Battery Pack with care. If dropped to the floor, it may be internally damaged and must be scrapped.

Ensure Battery and its insulation are not damaged (e.g. scratched, dented, punctured) prior to and throughout assembly.

Prior to assembly, ensure Battery edges and surfaces are not dented or deformed, and that fixtures and parts that will contact the Battery are free of foreign material.

Ensure screws and screwdrivers do not contact the Battery.

1. Use fingers to place the Battery on the Front Housing as shown.



Lenovo Moto G8 Power

Level 2 – Service and Repair Manual

2. Use fingers to press and secure the Battery BtB Connector as shown.



3. Use the Manual Roller to roll over the Battery for 10 cycles to secure the Battery as shown.

NOTE

For each cycle roll the Manual Roller from top to bottom of the Battery and vice versa.

NOTE

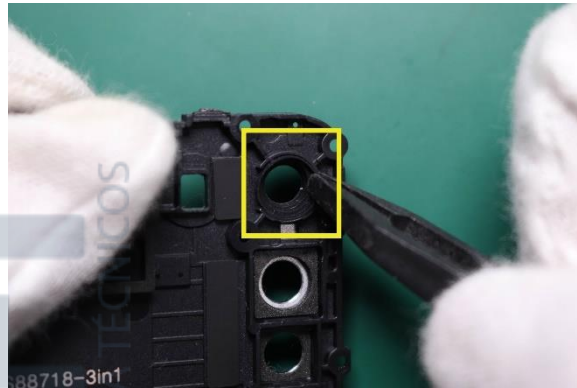
Each cycle should last for 3 seconds.



Rear-Facing Camera Grommet Assembly

<i>Description</i>	<i>Reference #</i>
Sofia R FRU Back Cover Top Assy	4
WT712300511031+retroactive sealant sleeve	40

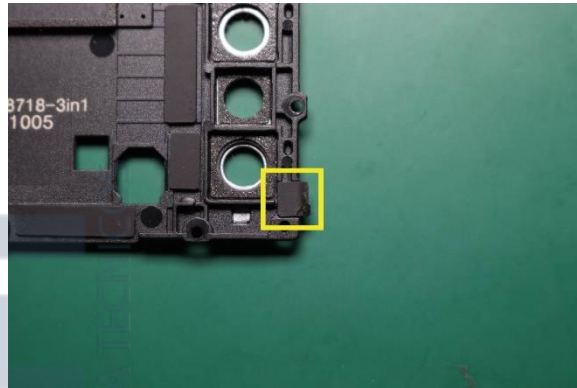
Use the Plastic Tweezer to place the Rear-Facing Camera Grommet on the location as shown.



Side Key Hole Seal Foam Assembly

<i>Description</i>	<i>Reference #</i>
Sofia R FRU Back Cover Top Assy	4
WT712400511061+Side key hole seal foam	45

Use the Plastic Tweezer to place the Side Key Hole Seal Foam on the location as shown.



Flash Lens Adhesive Assembly

<i>Description</i>	<i>Reference #</i>
Sofia R FRU Back Cover Top Assy	4
Sofia R Adh_CamLens_UP &712100511361 CSS	32
Sofia R Adh_CamLens_DN &712100511371 CSS	33

Use the fingers to place the Flash Lens Adhesive on the location as shown.



Flash Lens Assembly

<i>Description</i>	<i>Reference #</i>
Sofia R FRU Back Cover Top Assy	4
Sofia R Adh_CamLens_UP &712100511361 CSS	32
Sofia R Adh_CamLens_DN &712100511371 CSS	33

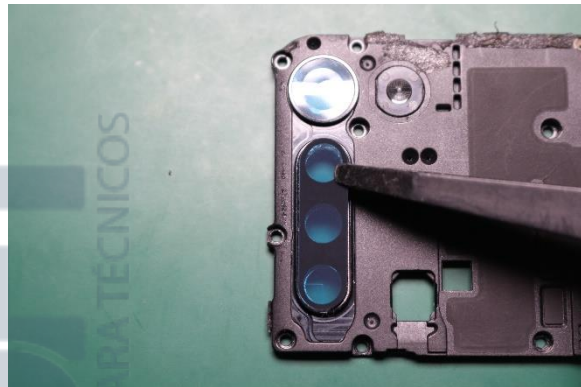
Use fingers to place the Flash Lens on the Top Carrier as shown.



Rear-Facing Camera Adhesive Assembly

<i>Description</i>	<i>Reference #</i>
Sofia R FRU Back Cover Top Assy	4
Sofia R Adh_CamLens_UP &712100511361 CSS	32
Sofia R Adh_CamLens_DN &712100511371 CSS	33

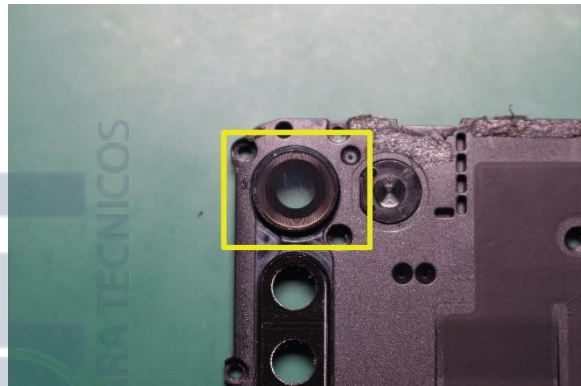
Use the Plastic Tweezer to place the Rear-Facing Camera Adhesive on the Top Carrier as shown.



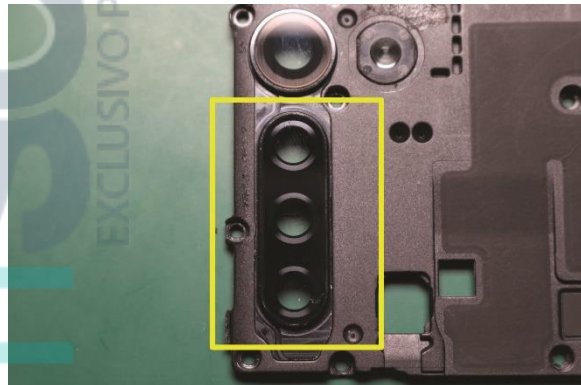
Rear-Facing Camera Lens Assembly

<i>Description</i>	<i>Reference #</i>
Sofia R FRU Back Cover Top Assy	4
WT711900511031+rear lens 1	22
WT711900511041+rear lens 2	23

1. Use the Plastic Tweezer to place the Rear-Facing Camera Lens on the location as shown.



2. Use the Plastic Tweezer to place the Rear-Facing Camera Lens on the location as shown.



Top Carrier Assembly

<i>Description</i>	<i>Reference #</i>
Sofia R FRU TP LCM Assy Vulcan Sofia R FRU TP LCM Assy Bermuda	1
Sofia R FRU Back Cover Top Assy	4

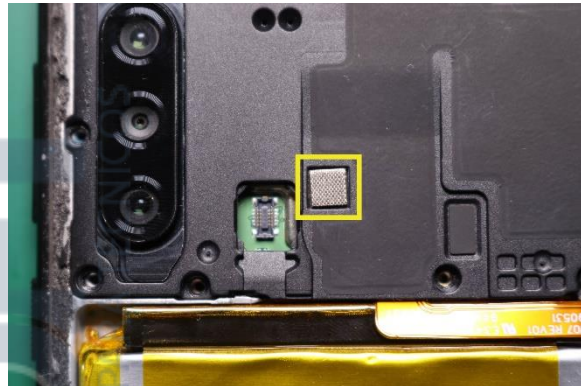
Use fingers to place the Top Carrier on the location as shown.



Finger Print Sensor Conductive Foam Assembly

<i>Description</i>	<i>Reference #</i>
Sofia R FRU TP LCM Assy Vulcan Sofia R FRU TP LCM Assy Bermuda	1
Sofia R FRU Back Cover Top Assy	4
WT712400511041+FPS conductive foam	41

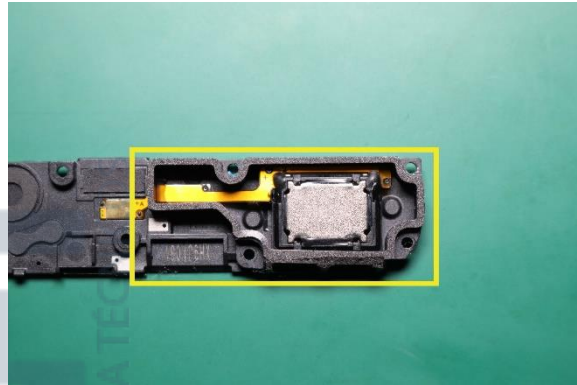
Use the Plastic Tweezer to place the Finger Print Sensor Conductive Foam on the location as shown.



Speaker Box Cushioning Foam Assembly

<i>Description</i>	<i>Reference #</i>
WT710320000221+lower horn BOX component	13
WT712400511071+Under BOX seal foam_SCH	44

Use the Plastic Tweezer to place the Speaker Box Cushioning Foam on the Speaker Box as shown.



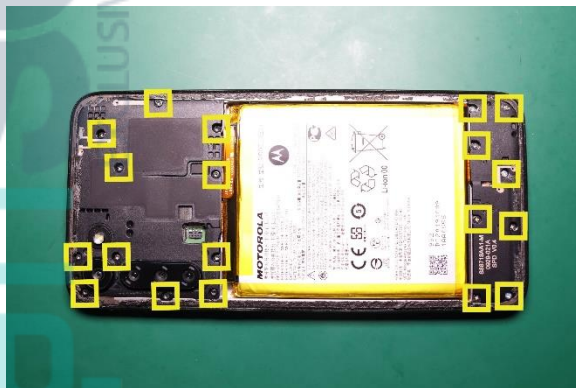
Speaker Box Assembly

<i>Description</i>	<i>Reference #</i>
Sofia R FRU TP LCM Assy Vulcan Sofia R FRU TP LCM Assy Bermuda	1
Sofia R FRU Back Cover Top Assy	4
WT710320000221+lower horn BOX component	13
WT710920001221+screw BLK	20

1. Use fingers to place the Speaker Box on the location as shown.



2. Use Torque Driver with Torx Bit to tighten the 11 Top Carrier and eight Speaker Box screws as shown.



Finger Print Sensor Assembly

<i>Description</i>	<i>Reference #</i>
Sofia R FRU TP LCM Assy Vulcan Sofia R FRU TP LCM Assy Bermuda	1
Sofia R FRU Back Cover Top Assy	4
FINGERPRT SCANNER,Sofia R,Vulcan,FPC1520 FINGERPRT SCANNER,Sofia R,Bermuda,FPC152	17

Use fingers to place the Finger Print Flex on the location as shown.



Finger Print Sensor CONN Cover Assembly

<i>Description</i>	<i>Reference #</i>
Sofia R FRU TP LCM Assy Vulcan Sofia R FRU TP LCM Assy Bermuda	1
Sofia R FRU Back Cover Top Assy	4
WT712300511091+Finger Print CONN cover	24

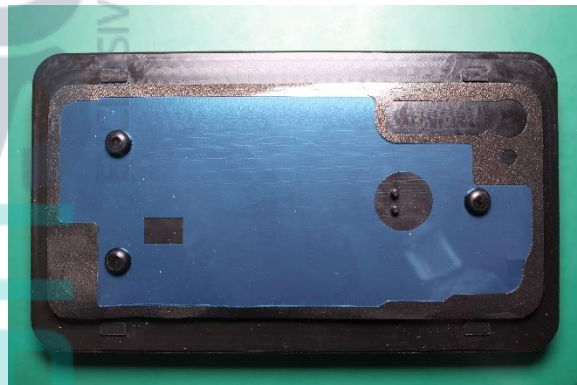
Use fingers to place the Finger Print Sensor
CONN Cover on the location as shown.



Battery Inlay Assembly

<i>Description</i>	<i>Reference #</i>
Sofia R FRU TP LCM Assy Vulcan Sofia R FRU TP LCM Assy Bermuda	1
Sofia R BATCVR Etching Vulcan BR Sofia R BATCVR Etching Bermuda BR Sofia R FRU BATCVR Assy Vulcan Sofia R FRU BATCVR Assy Bermuda Sofia R BATCVR Etching Bermuda AP Sofia R BATCVR Etching Vulcan AP Sofia R BATCVR Etching Bermuda EU Sofia R BATCVR Etching Vulcan EU Sofia R BATCVR Etching Bermuda LATAM Sofia R BATCVR Etching Vulcan LATAM	5
Sofia R Adh_FPS &712100511351 CSS	31
Sofia R Adh_BATCVR &712100511341 CSS	27
FINGERPRT SCANNER,Sofia R,Vulcan,FPC1520 FINGERPRT SCANNER,Sofia R,Bermuda,FPC152	17

1. Use the Plastic Tweezer to position the Battery Inlay Adhesive on the lower part of the Battery Inlay Press Fixture as shown.



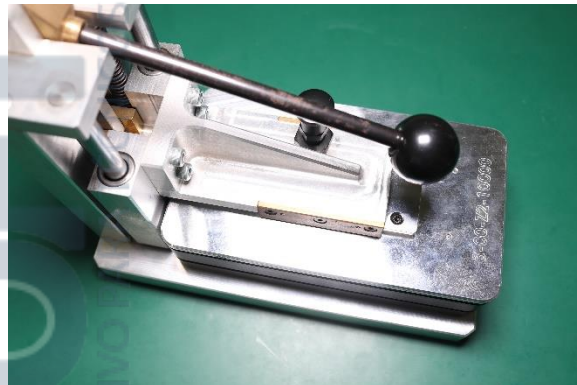
2. Use fingers to place the Battery Inlay on the top part of the Battery Inlay Press Fixture and then attach the Rear-Facing Camera adhesive as shown.



3. Place both the Battery Inlay Press Fixtures in the Fixture Press as shown.



4. Press down the handle of the Fixture Press for 5 minutes to secure the Battery Inlay firmly on the phone.



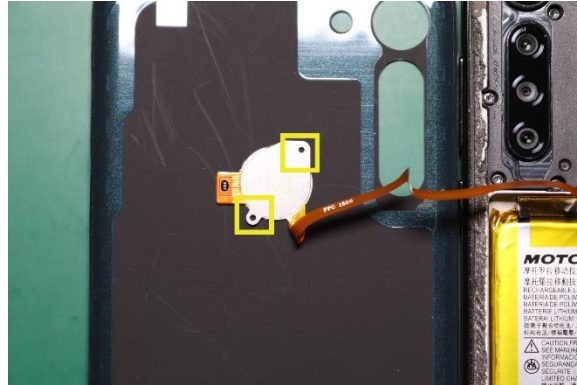
5. Take the Battery Inlay out from the Fixture Press.



6. Use fingers to place the Finger Print Sensor adhesive on the location as shown and peel off the liner.



7. Use fingers to attach the Finger Print Sensor Flex to the Battery Inlay, aligning with the pins as shown.



8. Place the phone with another set of Battery Inlay Press Fixture, display side down.

NOTE

Use care not to break the Finger Print Sensor Flex.



9. Press down the handle of the Fixture Press for 5 minutes to secure the Battery Inlay firmly on the phone.



10. Take the phone out from the Fixture Press.



IMEI Label Assembly

Description	Reference #
WT715308009591+three choice two SIM tray WT715308009601+Black cato_PC+SUS301_YJ WT715308009661+three choice two SIM tray WT715308009671+three choice two SIM tray	15
WT712700310121+IMEI label QF	-

Use the Plastic Tweezer to place the IMEI Label on the SIM tray as shown.



Sim Tray Assembly

<i>Description</i>	<i>Reference #</i>
Sofia R FRU TP LCM Assy Vulcan Sofia R FRU TP LCM Assy Bermuda	1
Sofia R BATCVR Etching Vulcan BR Sofia R BATCVR Etching Bermuda BR Sofia R FRU BATCVR Assy Vulcan Sofia R FRU BATCVR Assy Bermuda Sofia R BATCVR Etching Bermuda AP Sofia R BATCVR Etching Vulcan AP Sofia R BATCVR Etching Bermuda EU Sofia R BATCVR Etching Vulcan EU Sofia R BATCVR Etching Bermuda LATAM Sofia R BATCVR Etching Vulcan LATAM	5
WT715308009591+three choice two SIM tray WT715308009601+Black cató_PC+SUS301_YJ WT715308009661+three choice two SIM tray WT715308009671+three choice two SIM tray	15

1. Insert the SIM Tray in the transceiver as shown.



2. Use finger to press the SIM Tray until it secures into the transceiver.

